



ATLANTA  
PUBLIC  
SCHOOLS

DATA AND  
INFORMATION  
GROUP

# Grady Cluster Data Dig

Michael LaMont, Executive Director, Data + Information Group

January 2020



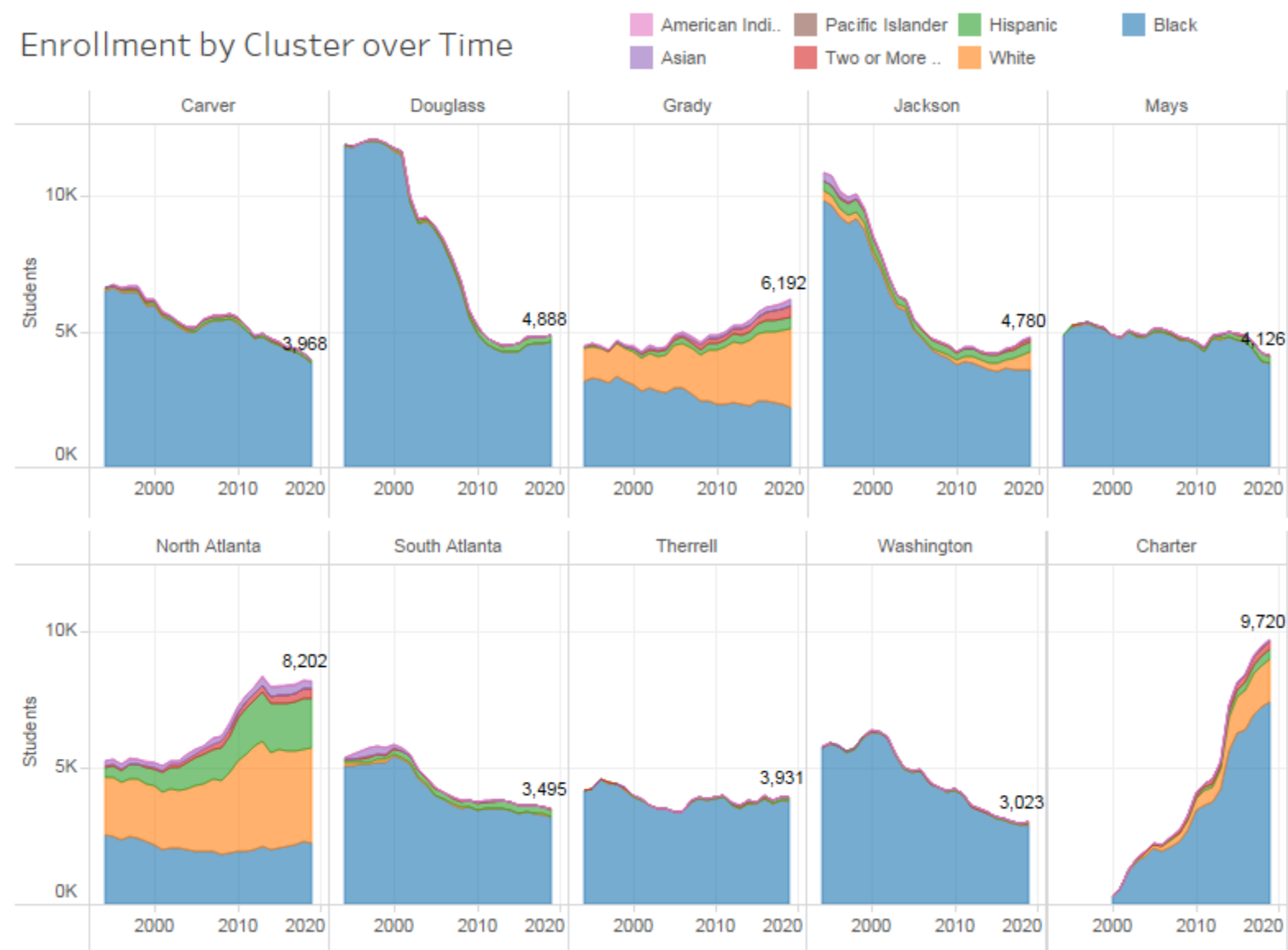
ATLANTA PUBLIC SCHOOLS  
**DATA + INFORMATION GROUP**  
*We dig data.*

# Content

---

- Enrollment Trends
- District Performance Comparison: Challenge Index
- Milestones Performance Drill Down
- Milestones Performance Drill Down by Subgroup
- Progress Performance Drill Down
- CCRPI Performance Drill Down
- Overall Graduation Results and Subgroups
- SAT/ACT Performance

# Enrollment by Race/Ethnicity: APS and Cluster



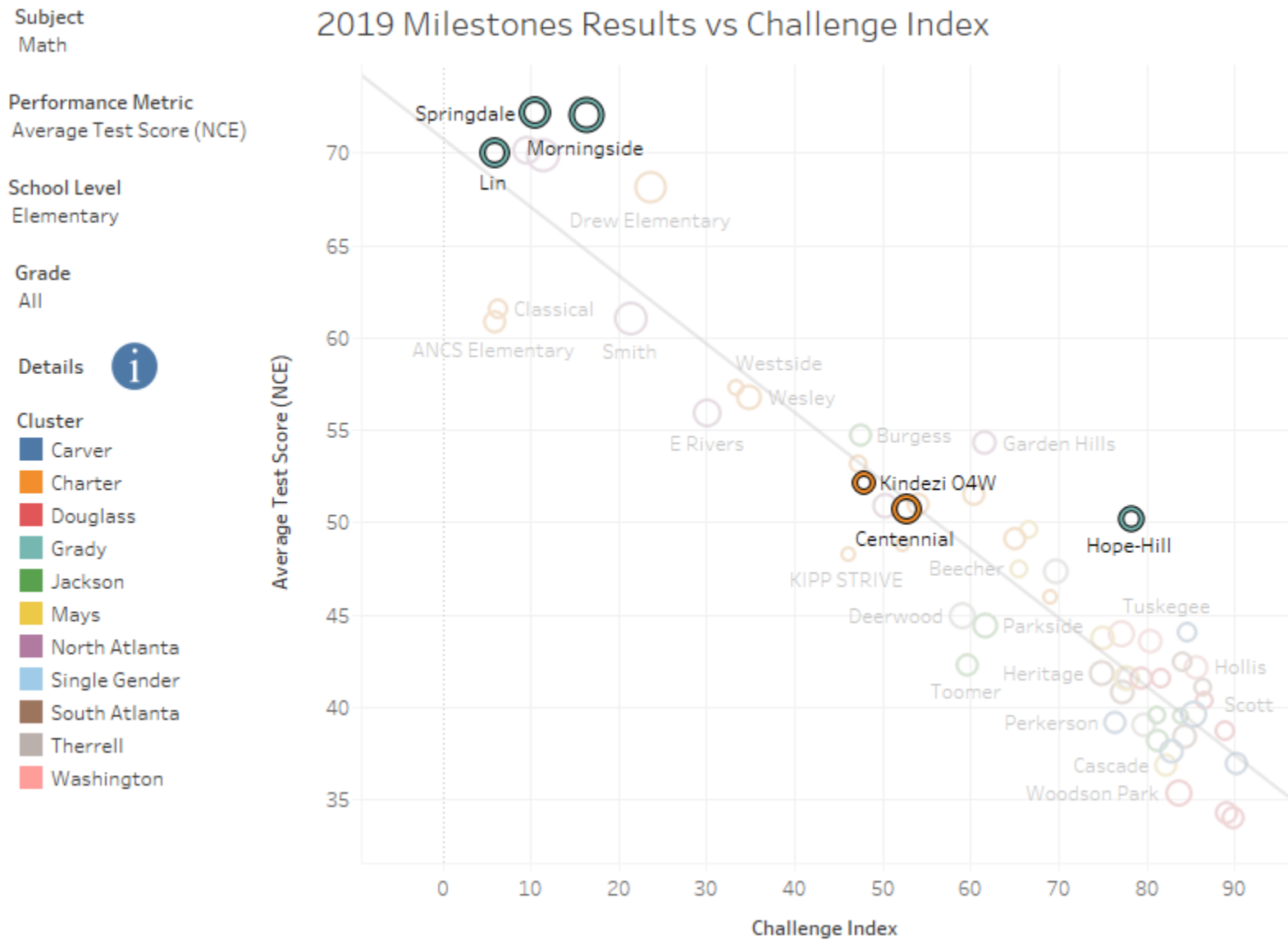
# Performance Comparison: District

---

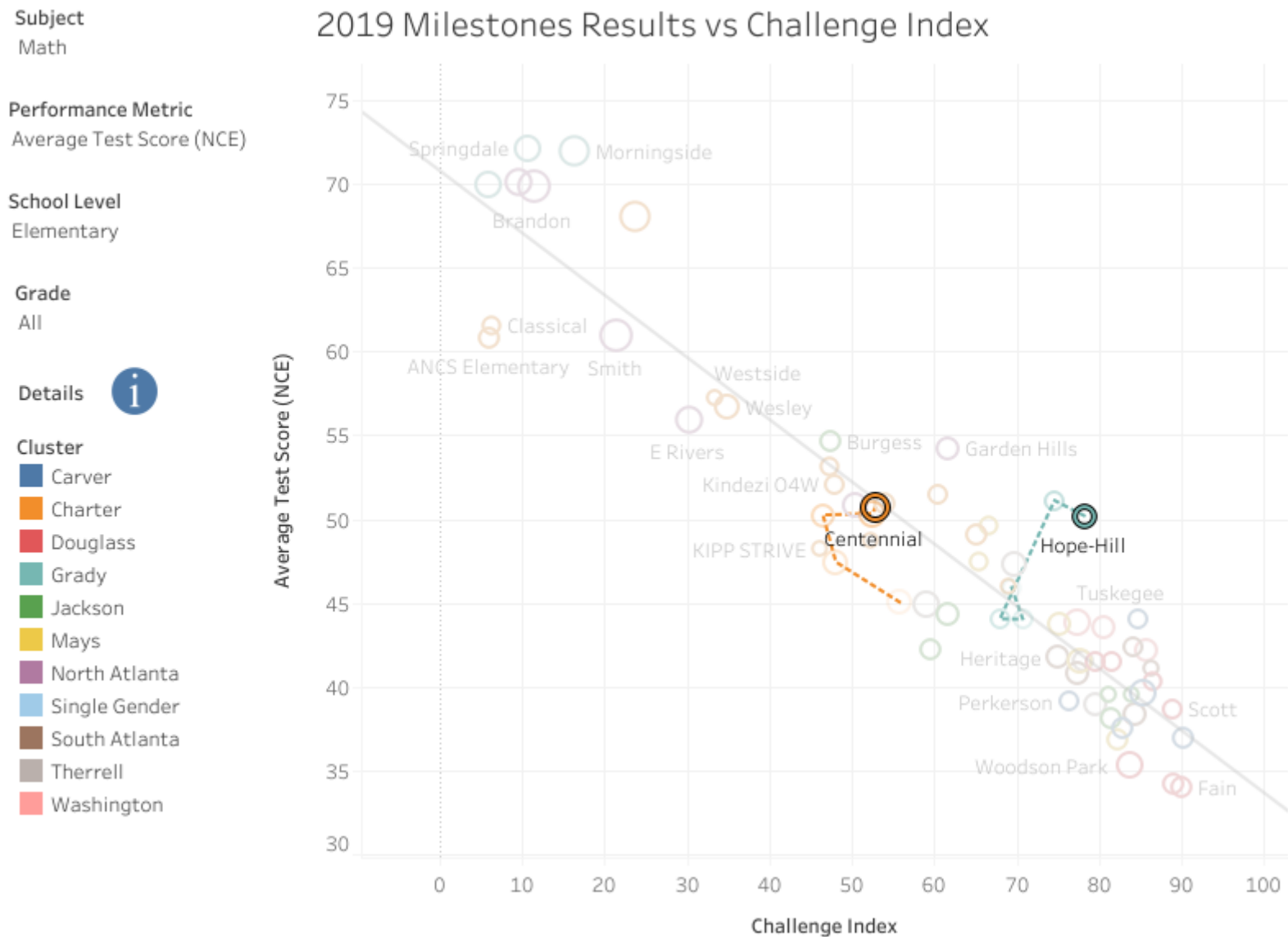
## Challenge Index

- Puts schools on even playing field by taking the populations they serve into account
- Includes poverty and English learner indicators
- Now includes 5 years of trend data
- <https://apsinsights.org/2019/07/29/relationship-between-school-performance-and-poverty-2019/>

# Elementary School Math Milestones vs. Poverty



# Elementary School Math Milestones vs. Poverty




# Middle School Math Milestones vs. Poverty

Subject  
Math

Performance Metric  
Average Test Score (NCE)

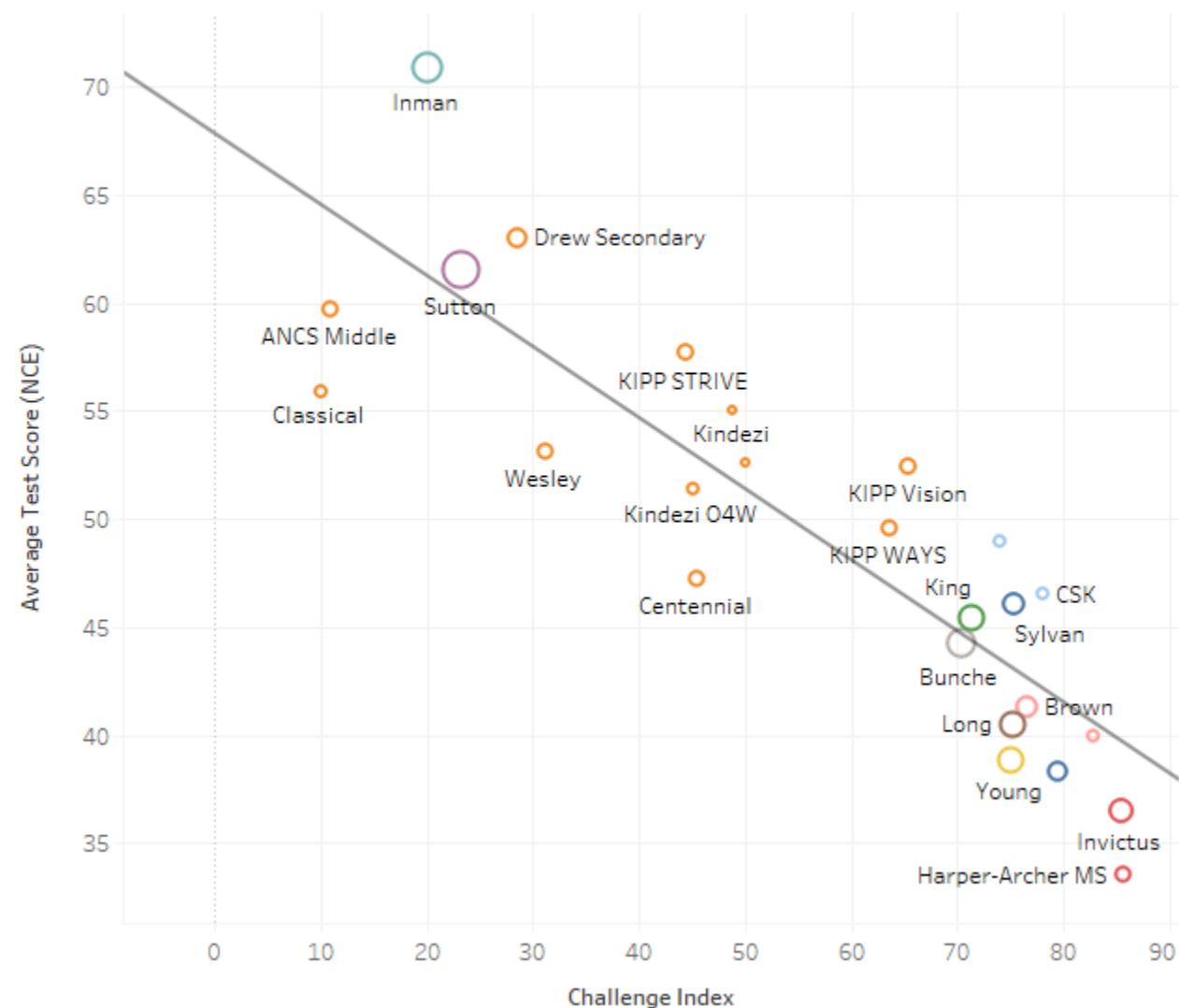
School Level  
Middle

Grade  
All

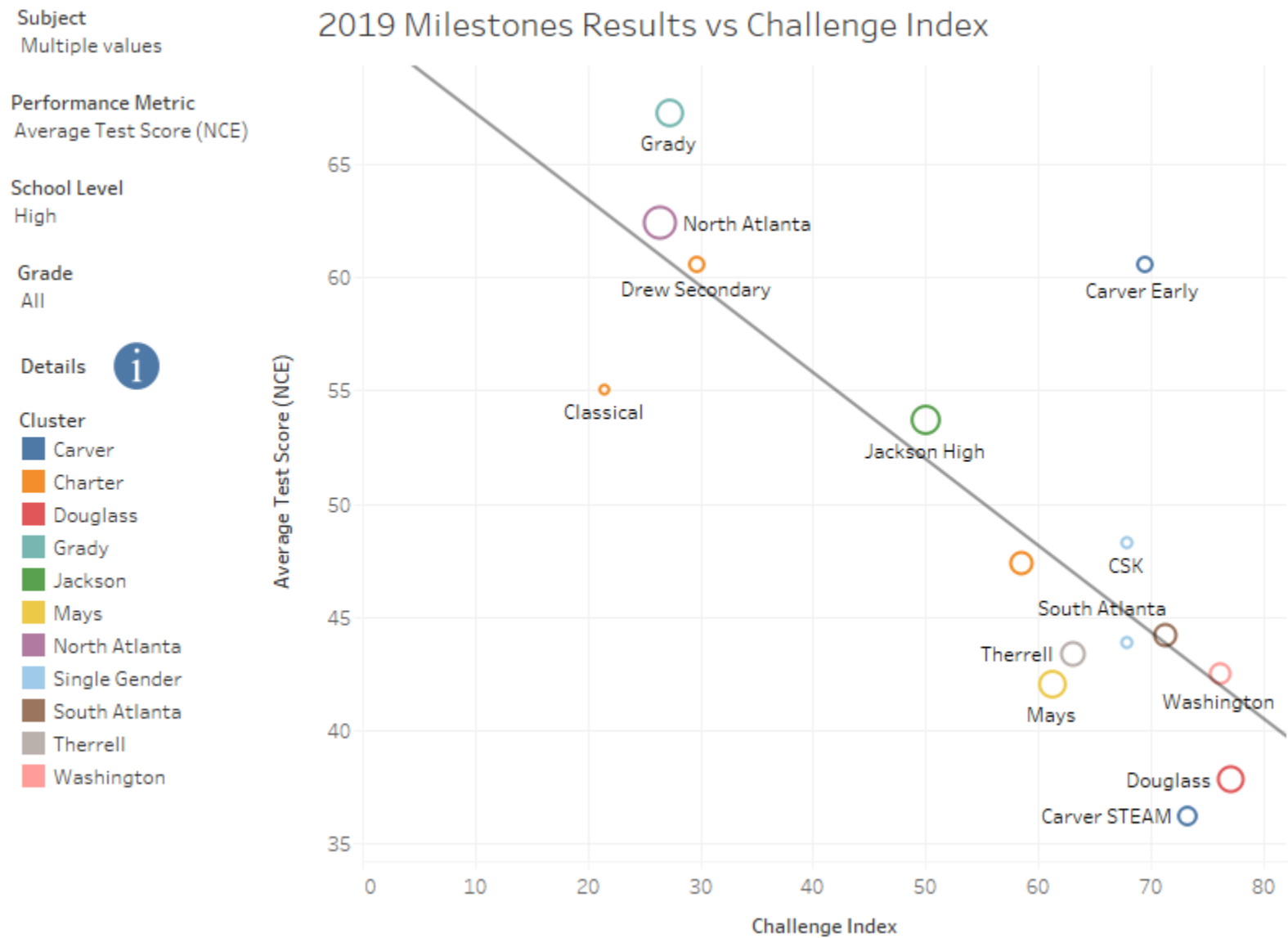
Details 

- Cluster
- Carver
  - Charter
  - Douglass
  - Grady
  - Jackson
  - Mays
  - North Atlanta
  - Single Gender
  - South Atlanta
  - Therrell
  - Washington

2019 Milestones Results vs Challenge Index



# High School Math Milestones vs. Poverty

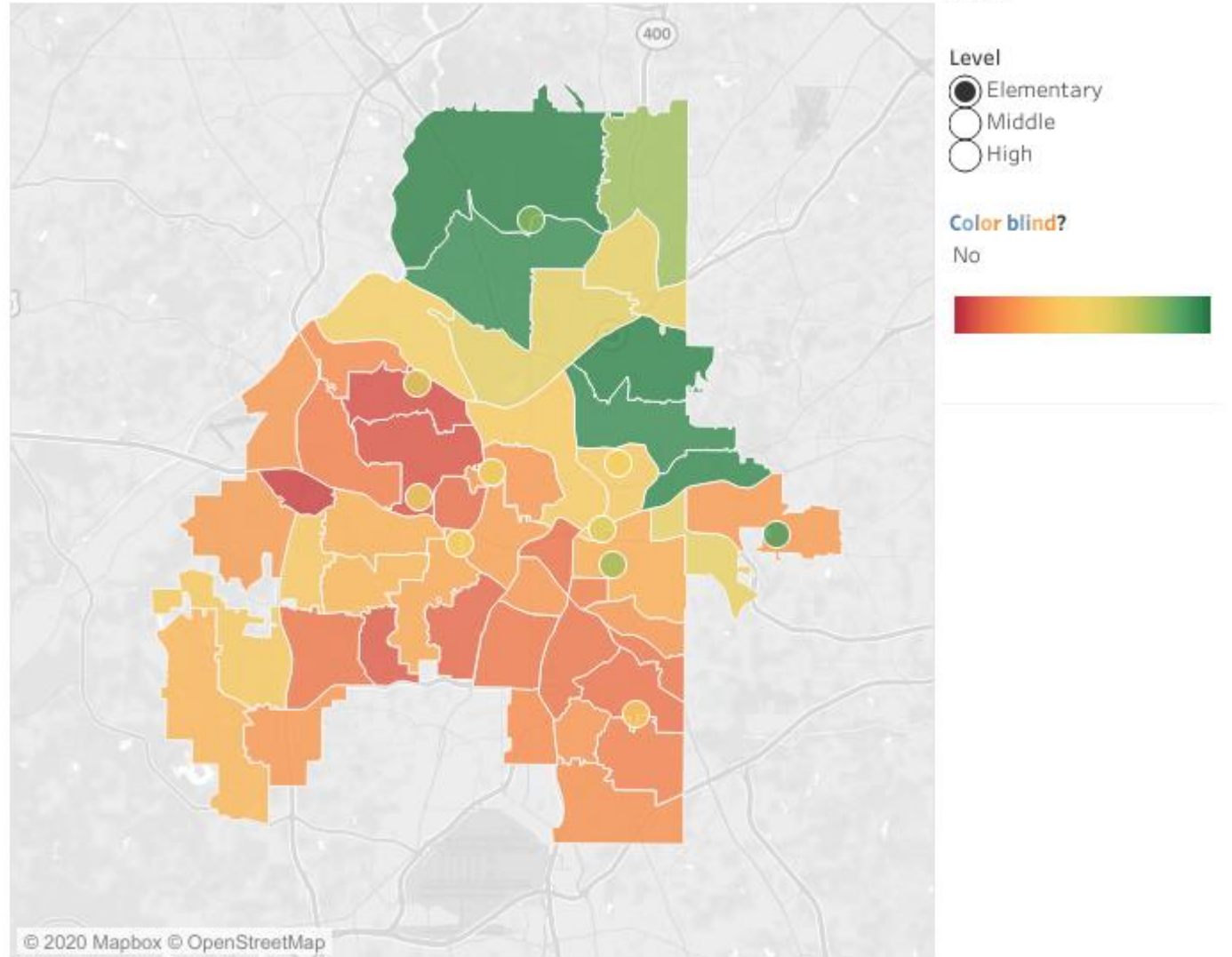




# Performance Drill Down: Milestones

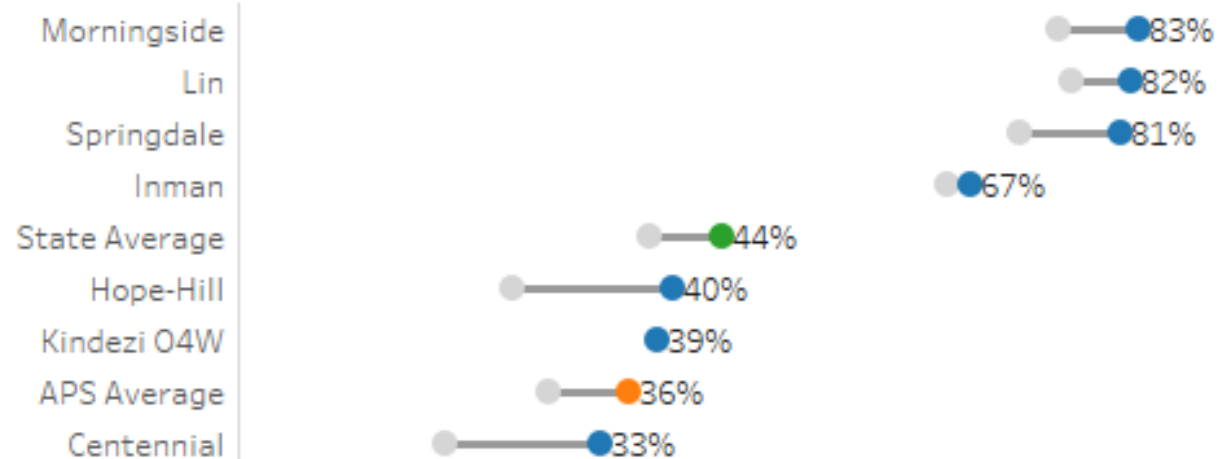
- Percent Proficient and Above
- Elementary, Middle, High
- <https://apsinsights.org/2019/07/26/milestones-achievement-2019/>

Milestones Proficiency 2019



# 3<sup>rd</sup> – 8<sup>th</sup> Grade Milestones Results: 2018 Percentage Proficient and Above

## Milestones Percentage Proficient and Above



Achievement Level  
Proficient and Above

System  
ATLANTA PUBLIC SCHOOLS

Year  
Multiple values

Subject  
Math

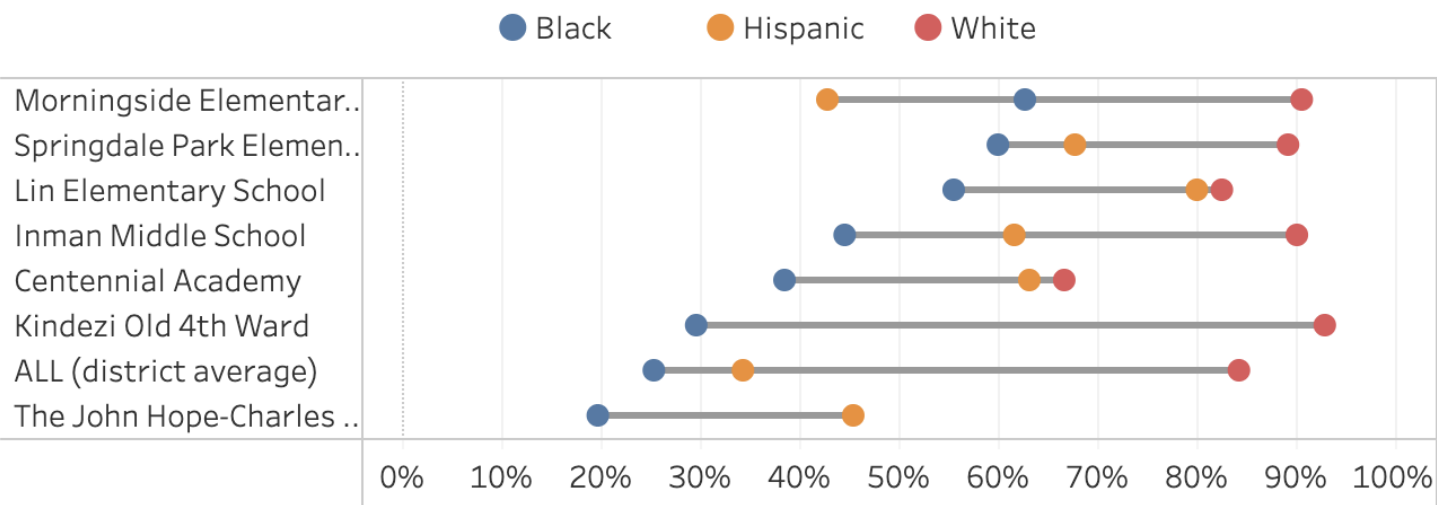
School Level  
All

Grade  
All

Key  
2019  
District (2019)  
State (2019)  
2015

# Performance Drill Down: Milestones by Subgroup

Milestones ELA Proficiency by School



Highlight School

Highlight Instn Na... 🔍

District

Atlanta Public Sch... ▼

Test

ELA ▼

Achievement Level

Proficient and Abo... ▼

Subgroups

(Multiple values) ▼

Sort by

Black ▼

Year

2019 ▼

Details



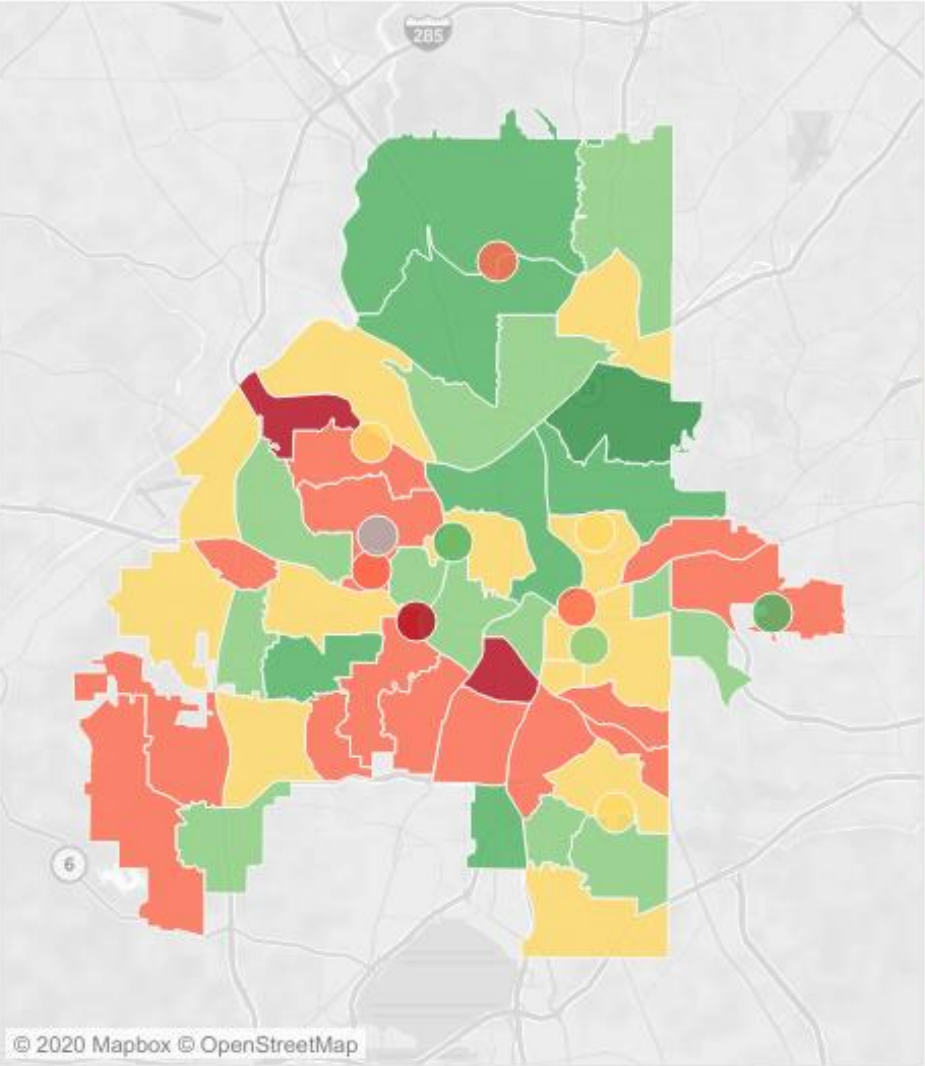
## Performance Drill Down: Progress

---

- Each student gets a value 1-99 depending on how much they grew compared to similarly performing students the previous school year
- Aggregated to show percentage of students making typical or high growth
- Used in CCRPI
- State average is 65
- <https://apsinsights.org/2019/12/04/2019-student-growth/>

# Performance Drill Down: Progress

Student Growth by School..



Level  
Elementary

Subject  
ELA

Year  
3 Year Average

Color Blind ☐

Color Key

- > 75%
- 70-74%
- 65-69%
- 60-64%
- 55-59%
- < 55%
- No score

i

# Performance Drill Down: Elementary School

District  
Atlanta Public Schools

Cluster  
Grady

School  
Hope-Hill

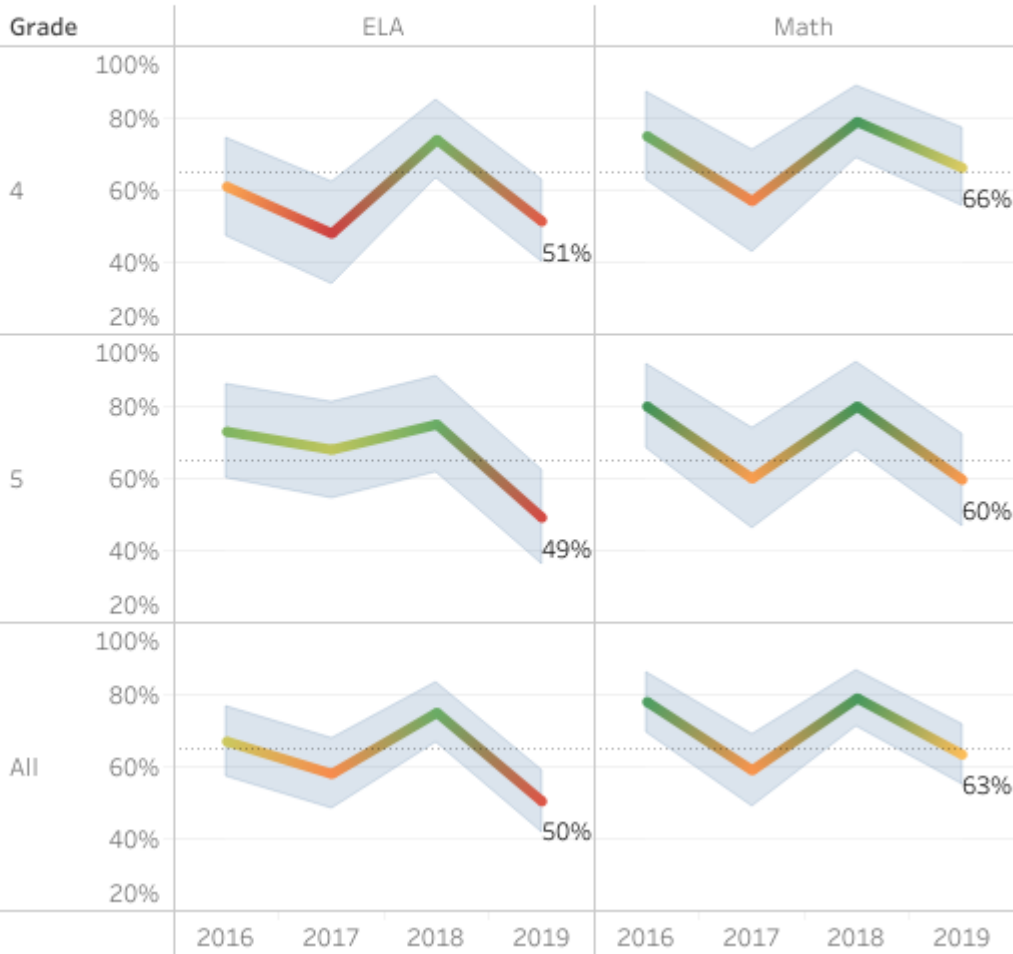
Years  
Multiple values

Typical or High  
45% 85%



## Percentage of Students making Typical or High Growth

Dotted line is the approximate state average. Blue bands are confidence intervals.



# Performance Drill Down: Elementary School

District  
Atlanta Public Schools

Cluster  
Grady

School  
Lin

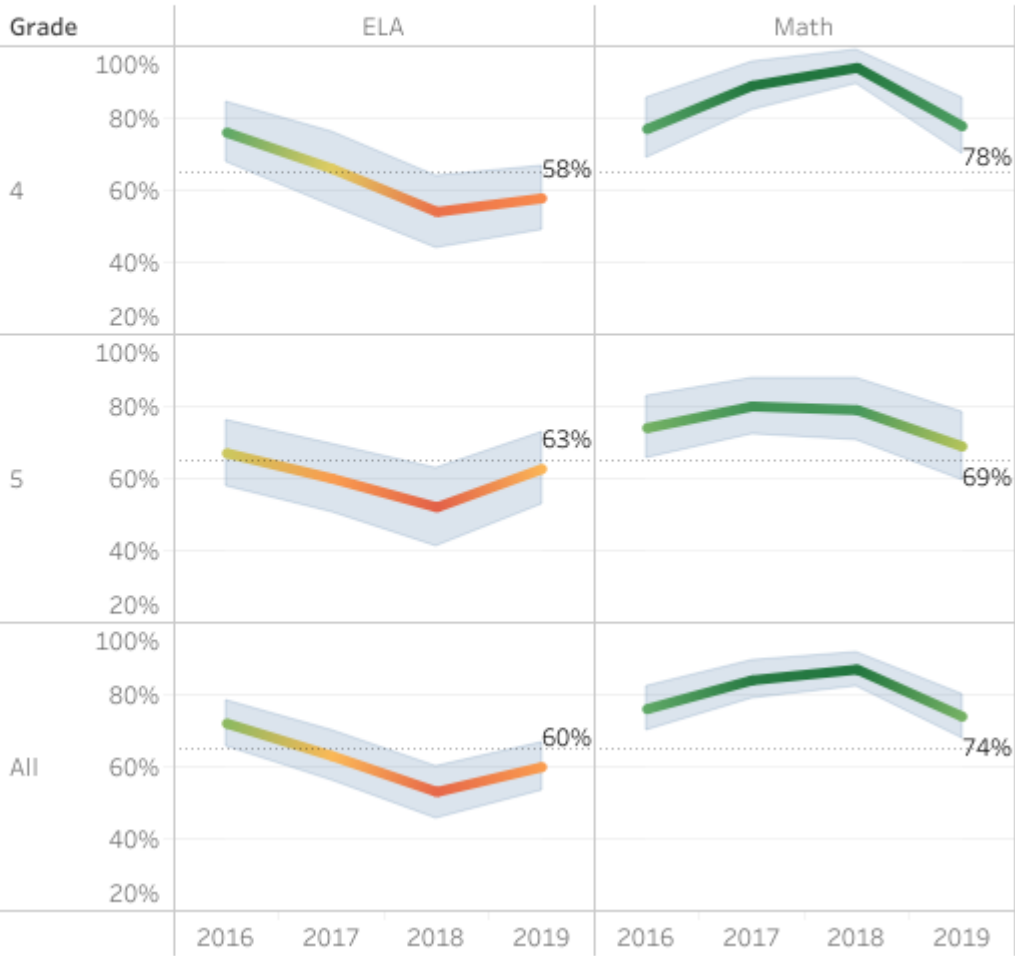
Years  
Multiple values

Typical or High  
45% 85%



## Percentage of Students making Typical or High Growth

Dotted line is the approximate state average. Blue bands are confidence intervals.



# Performance Drill Down: Elementary School

District  
Atlanta Public Schools

Cluster  
Grady

School  
Morningside

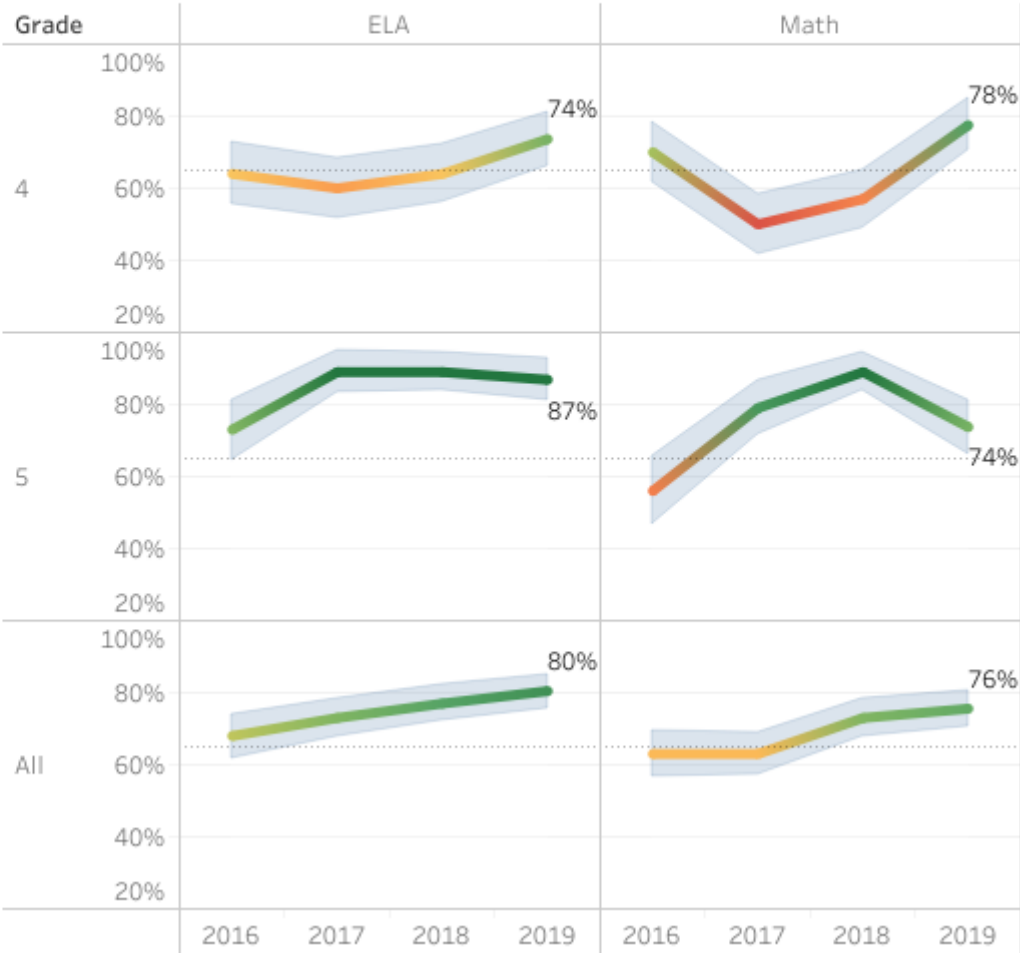
Years  
Multiple values

Typical or High  
45% 85%



## Percentage of Students making Typical or High Growth

Dotted line is the approximate state average. Blue bands are confidence intervals.





# Performance Drill Down: Elementary School

District  
Atlanta Public Schools

Cluster  
Grady

School  
Springdale

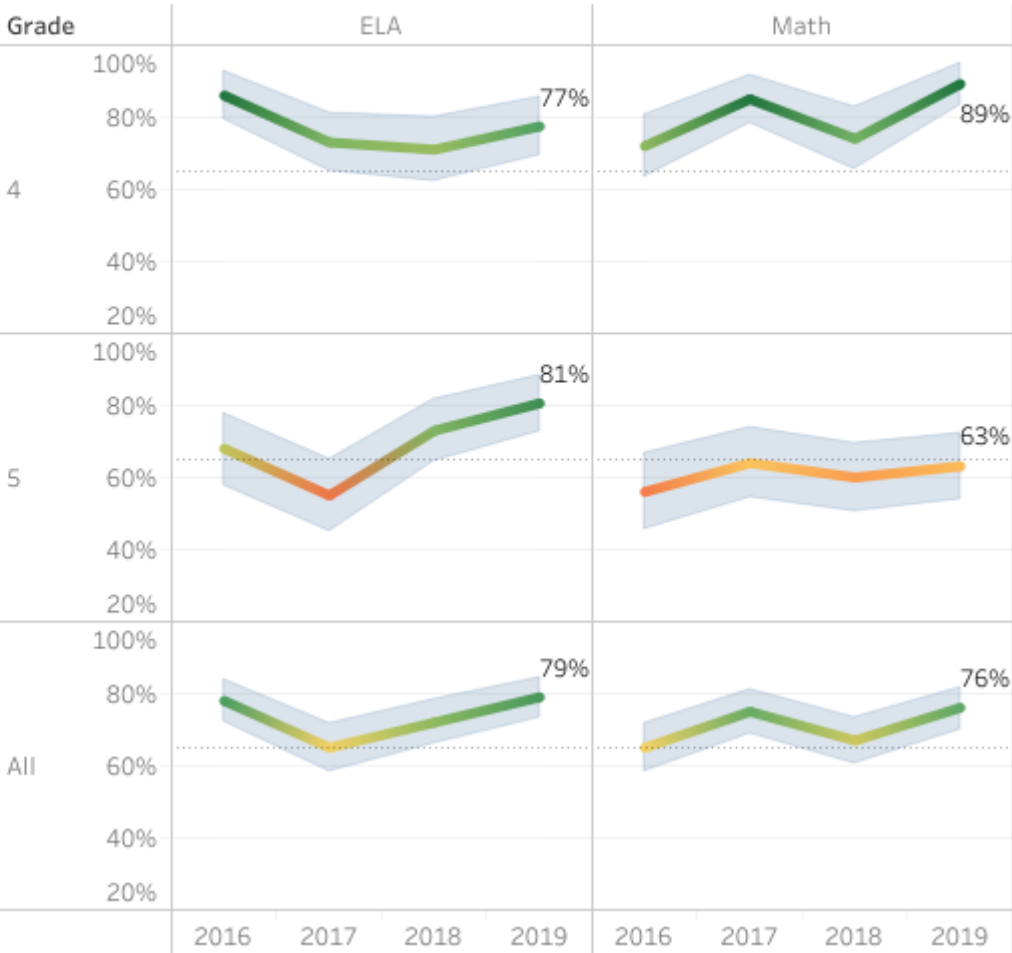
Years  
Multiple values

Typical or High  
45% 85%



## Percentage of Students making Typical or High Growth

Dotted line is the approximate state average. Blue bands are confidence intervals.



# Performance Drill Down: Elementary and Middle

District  
Atlanta Public Schools

Cluster  
Charter

School  
Centennial

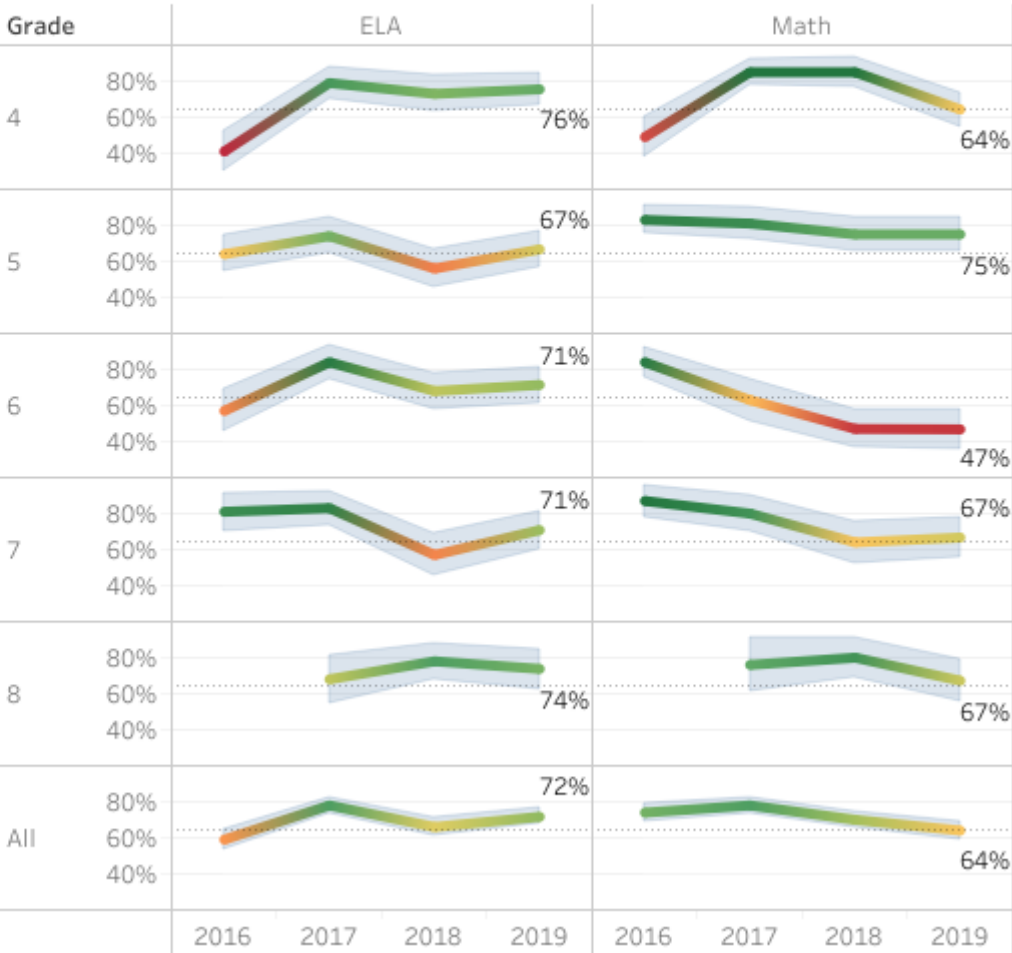
Years  
Multiple values

Typical or High  
45% 85%



## Percentage of Students making Typical or High Growth

Dotted line is the approximate state average. Blue bands are confidence intervals.



# Performance Drill Down: Elementary and Middle

District  
Atlanta Public Schools

Cluster  
Charter

School  
Kindezi O4W

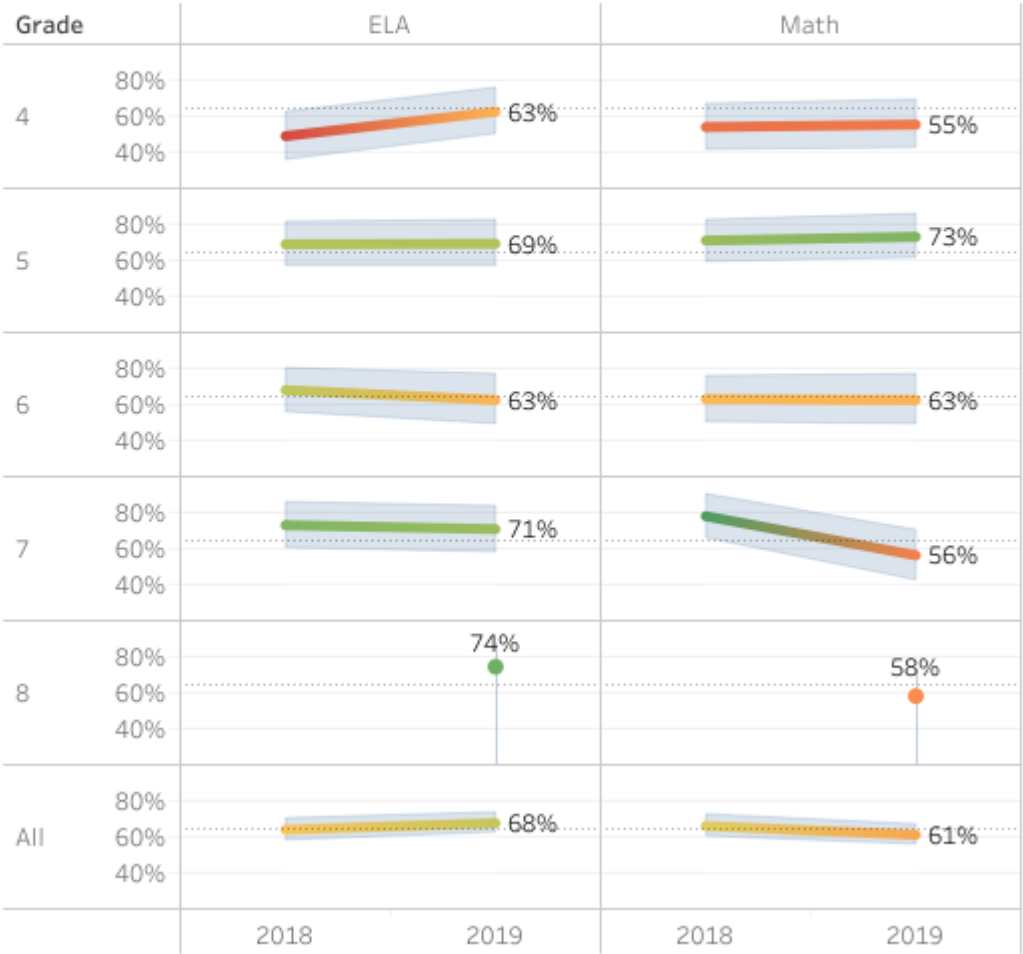
Years  
Multiple values

Typical or High  
45% 85%



## Percentage of Students making Typical or High Growth

Dotted line is the approximate state average. Blue bands are confidence intervals.



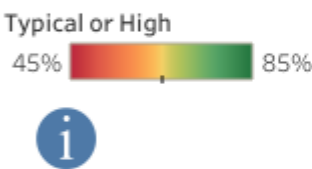
# Performance Drill Down: Middle School

District  
Atlanta Public Schools

Cluster  
Grady

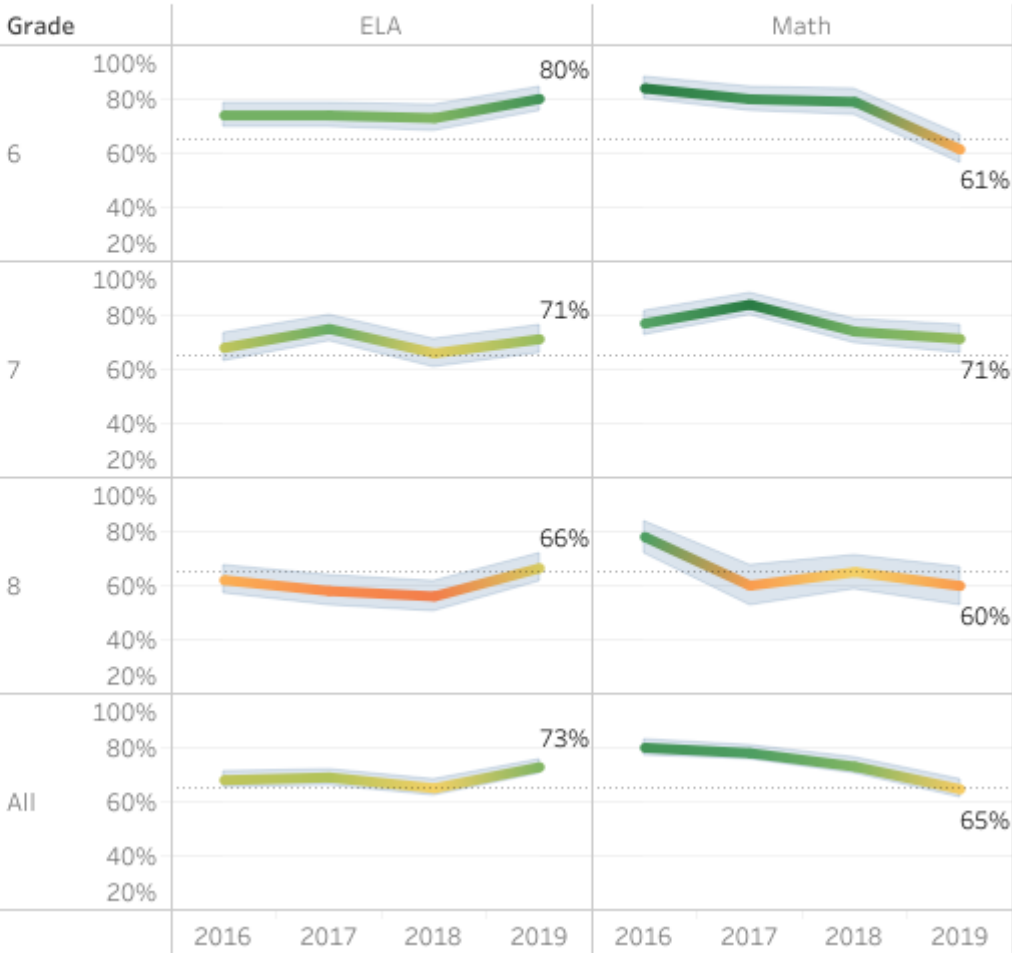
School  
Inman

Years  
Multiple values



## Percentage of Students making Typical or High Growth

Dotted line is the approximate state average. Blue bands are confidence intervals.



# Performance Drill Down: High School

System  
Atlanta Public Schools

School  
Grady

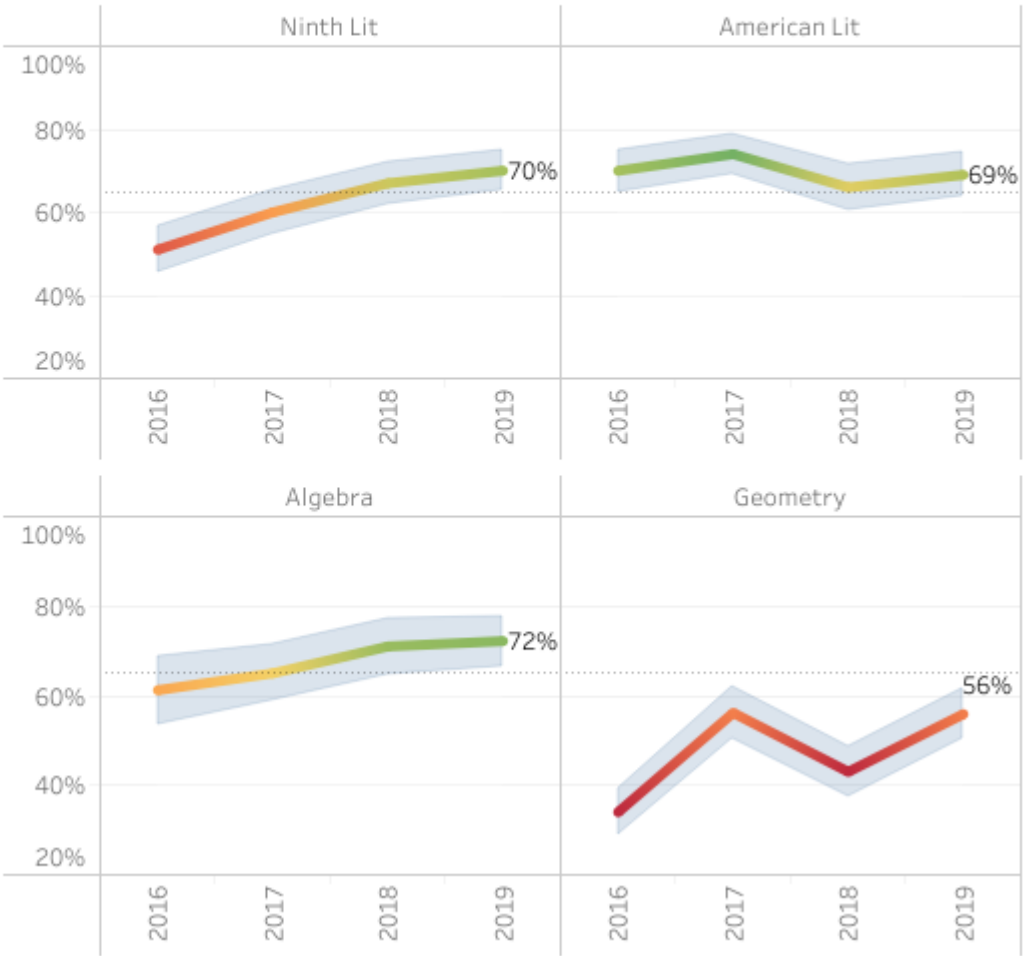
Years  
Multiple values

Typical or High  
45% 85%



## Percentage of Students making Typical or High Growth

Dotted line is the approximate state average. Blue bands are confidence intervals.



# Performance Drill Down: CCRPI

---

- GaDOE gives each school a score based on a 100-point index
- Includes many indicators but Milestones matters the most
- Updates to calculations based on approved ESSA plan
- <http://ccrpi.gadoe.org/2019/>
- <https://apsinsights.org/2019/10/25/2019-ccrpi-results/>

# Performance Drill Down: Elementary CCRPI Percentiles

System

Atlanta Public S... ▼

Level

Elementary ▼

Choose metric

CCRPI Percentile ▼

Cluster


(Multiple values) ▼

Status

Open in 2019 ▼

Color Blind

No ▼



CCRPI Percentile by School

|             | 2014 | 2015 | 2016 | 2017 | 2018 | 2019 | 3 Year Avg |
|-------------|------|------|------|------|------|------|------------|
| Morningside | 97   | 99   | 98   | 95   | 99   | 98   | 99         |
| Springdale  | 92   | 98   | 97   | 96   | 96   | 98   | 98         |
| Lin         | 92   | 96   | 99   | 98   | 96   | 85   | 96         |
| Centennial  | 33   | 9    | 13   | 73   | 41   | 69   | 66         |
| Kindezi O4W |      |      |      |      | 35   | 49   | 44         |
| Hope-Hill   | 21   | 32   | 22   | 16   | 72   | 10   | 28         |


# Performance Drill Down: Elementary CCRPI Category Percentiles

System  
Atlanta Public Schoo..

CCRPI Category Percentiles by School

| Level                        |             | Content Mastery | Progress | Closing Gaps | Readiness | CCRPI |
|------------------------------|-------------|-----------------|----------|--------------|-----------|-------|
| Elementary                   |             |                 |          |              |           |       |
| Year<br>2019                 | Morningside | 98              | 88       | 78           | 99        | 98    |
|                              | Springdale  | 98              | 92       | 77           | 96        | 98    |
|                              | Lin         | 97              | 35       | 51           | 97        | 85    |
|                              | Centennial  | 51              | 59       | 82           | 42        | 69    |
|                              | Kindezi O4W | 33              | 33       | 82           | 29        | 49    |
| Choose Metric<br>Percentiles | Hope-Hill   | 27              | 19       | 6            | 13        | 10    |

Color Blind  
No





# Performance Drill Down: Cluster Middle CCRPI Percentiles

System  
Atlanta Public Scho..

## CCRPI Percentile by School

| Level            |                  | 2014 | 2015 | 2016 | 2017 | 2018 | 2019 | 3 Year Avg |
|------------------|------------------|------|------|------|------|------|------|------------|
| Middle           | Inman            | 73   | 96   | 95   | 91   | 93   | 86   | 92         |
|                  | Drew             | 77   | 63   | 30   | 87   | 87   | 81   | 88         |
| Choose metric    | Sutton           | 58   | 73   | 57   | 60   | 82   | 83   | 80         |
| CCRPI Percentile | KIPP STRIVE      | 93   | 90   | 73   | 50   | 84   | 74   | 74         |
|                  | Westside         |      |      |      |      | 61   | 75   | 72         |
| Cluster          | Classical        |      | 16   | 20   | 71   | 74   | 50   | 70         |
| All              | ANCS Middle      | 64   | 55   | 49   | 65   | 47   | 60   | 61         |
|                  | Kindezi          | 98   | 90   | 65   | 44   | 63   | 57   | 58         |
| Status           | Wesley           | 23   | 38   | 45   | 16   | 84   | 64   | 57         |
| Open in 2019     | KIPP WAYS        | 59   | 90   | 77   | 47   | 68   | 33   | 52         |
|                  | KIPP Vision      | 51   | 56   | 10   | 33   | 17   | 85   | 47         |
| Color Blind      | CSK              | 20   | 13   | 18   | 36   | 36   | 63   | 47         |
| No               | Kindezi O4W      |      |      |      |      | 65   | 22   | 44         |
|                  | Centennial       |      | 22   | 79   | 73   | 34   | 13   | 39         |
|                  | BEST             | 5    | 7    | 3    | 14   | 51   | 44   | 35         |
|                  | Sylvan           | 3    | 19   | 15   | 11   | 26   | 36   | 23         |
|                  | King             | 20   | 17   | 15   | 10   | 24   | 37   | 21         |
|                  | Bunche           | 12   | 14   | 14   | 6    | 27   | 45   | 21         |
|                  | Brown            | 20   | 13   | 17   | 3    | 23   | 24   | 13         |
|                  | Hollis           |      |      |      |      | 18   | 11   | 13         |
|                  | Long             | 15   | 6    | 5    | 9    | 25   | 5    | 11         |
|                  | Price            | 10   | 10   | 7    | 2    | 10   | 7    | 5          |
|                  | Invictus         |      |      |      |      | 5    | 5    | 4          |
|                  | Young            | 4    | 12   | 5    | 5    | 3    | 5    | 3          |
|                  | Harper-Archer MS | 12   | 2    | 1    | 1    | 6    | 3    | 2          |
|                  | Forrest Hill     | 1    | 1    | 1    |      |      |      |            |




# Performance Drill Down: Cluster High CCRPI Percentiles

System  
Atlanta Public Scho..

CCRPI Percentile by School

| Level         |                  | 2014 | 2015 | 2016 | 2017 | 2018 | 2019 | 3 Year Avg |
|---------------|------------------|------|------|------|------|------|------|------------|
| High          | Drew             | 88   | 44   | 65   | 88   | 91   | 63   | 85         |
|               | Grady            | 59   | 37   | 43   | 71   | 79   | 87   | 81         |
| Choose metric | North Atlanta    | 68   | 59   | 63   | 65   | 68   | 85   | 76         |
|               | CCRPI Percentile |      |      |      |      |      |      |            |
| Cluster       | Carver Early     | 99   | 99   | 95   | 89   | 69   | 49   | 73         |
|               | Classical        |      |      | 81   | 36   | 76   | 88   | 71         |
| All           | Jackson          | 15   | 37   | 53   | 45   | 35   | 65   | 51         |
|               | CSK              | 21   | 45   | 26   | 36   | 28   | 51   | 39         |
| Status        | KIPP Collegiate  | 44   | 84   | 53   | 37   | 40   | 25   | 34         |
|               | Open in 2019     |      |      |      |      |      |      |            |
|               | Therrell         |      |      | 18   | 23   | 17   | 19   | 23         |
|               | BEST             | 32   | 12   | 13   | 27   | 14   | 12   | 19         |
| Color Blind   | South Atlanta    |      |      |      | 7    | 29   | 15   | 15         |
|               | No               |      |      |      |      |      |      |            |
|               | Washington       |      | 31   | 8    | 23   | 13   | 8    | 14         |
|               | Mays             | 11   | 28   | 18   | 13   | 12   | 9    | 13         |
|               | Douglass         | 7    | 11   | 5    | 11   | 7    | 6    | 9          |
|               | Carver           |      |      |      | 5    | 4    | 7    | 6          |
|               | Crim             | 3    | 1    | 1    | 7    | 1    | 1    | 2          |
|               | Forrest Hill     | 1    | 1    | 1    | 1    | 1    | 1    | 1          |

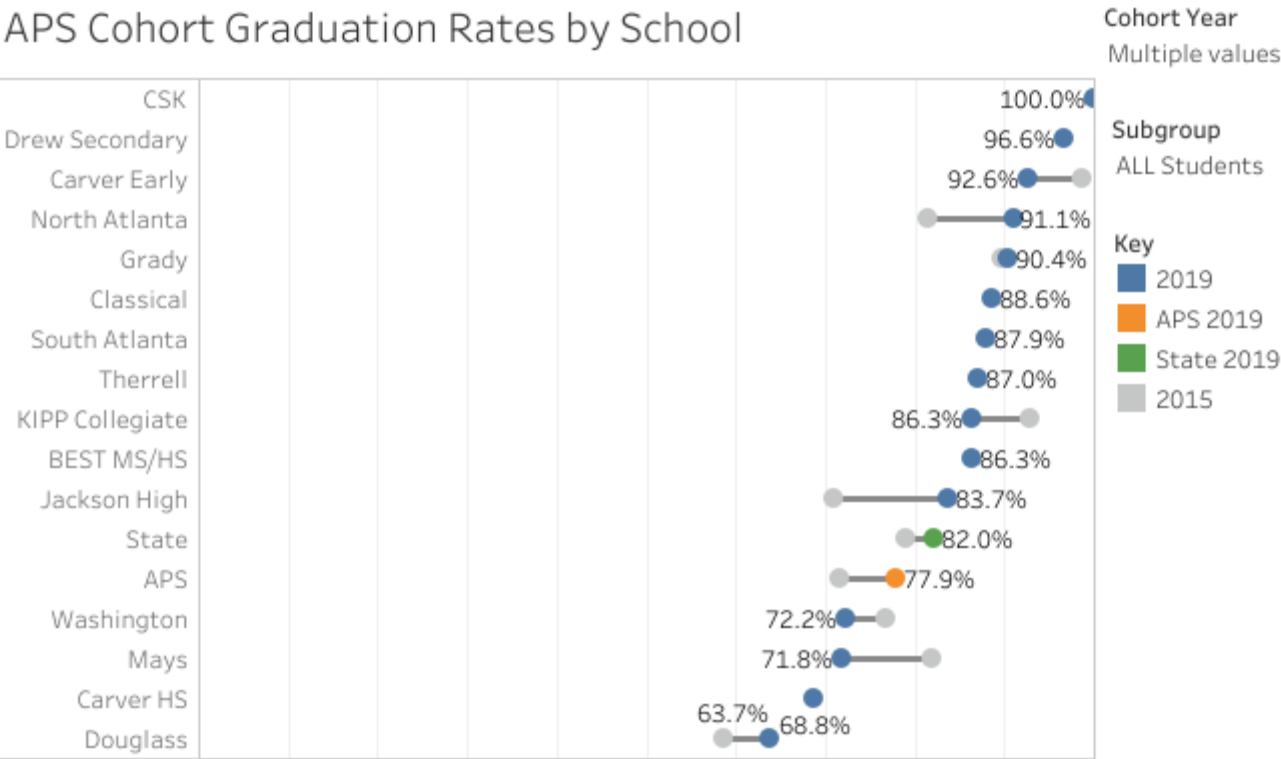
 i

## Performance Drill Down: Graduation Rate

---

- Percentage of students who graduate high school in four years
  - Based on a cohort of students who start high school at the same time:
    - A 2019 graduation rate of 75% means that 75% of students who started high school in 2015-16 graduated in four years.
    - Students who transfer are removed from the cohort
- <https://apsinsights.org/2019/09/18/2019-graduation-rates/>

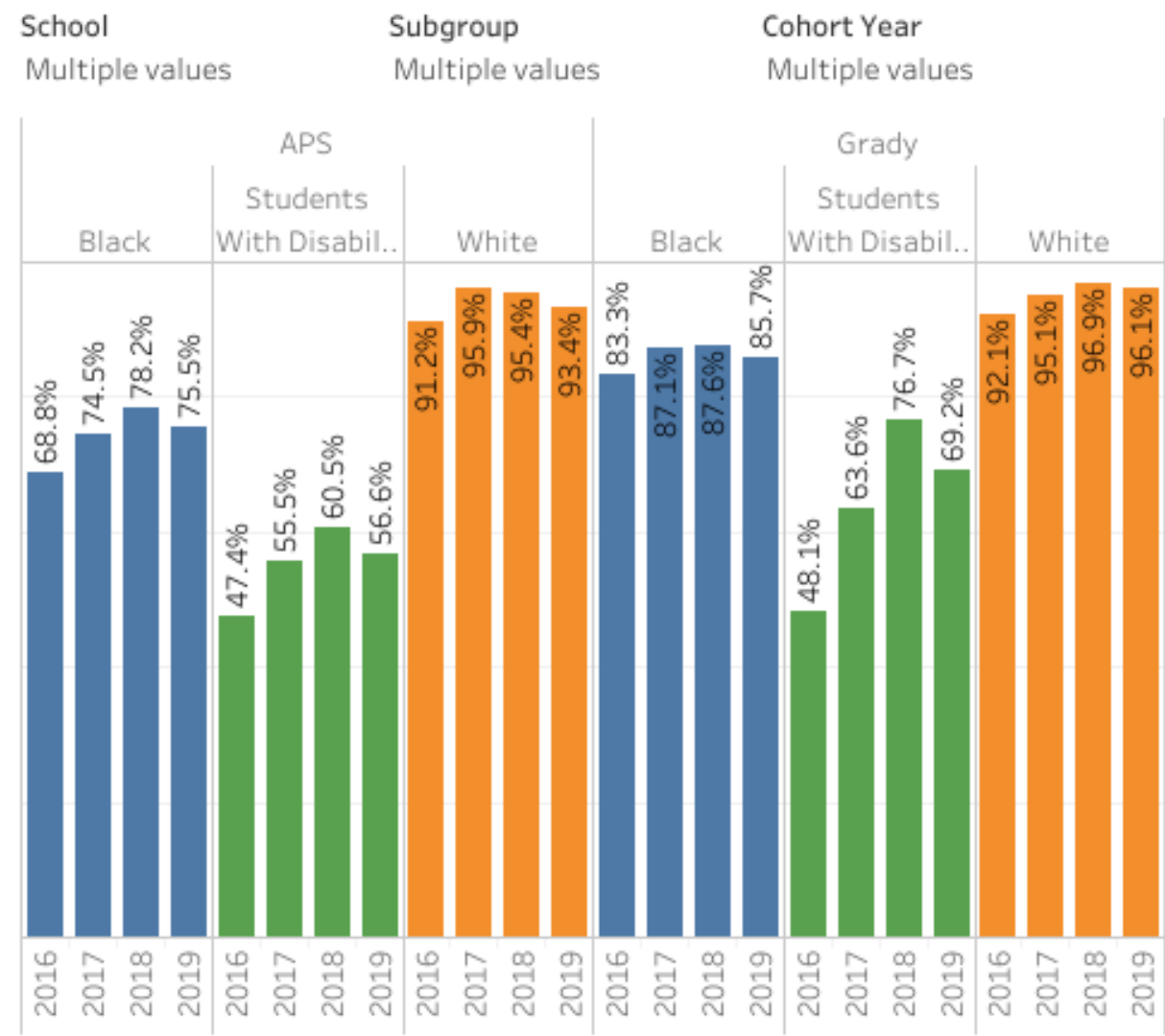
# Performance Drill Down: Graduation Rate



• <https://apsinsights.org/2019/09/18/2019-graduation-rates/>

# Performance Drill Down: Graduation Rates by Subgroup over Time

APS Cohort Graduation Rates over Time



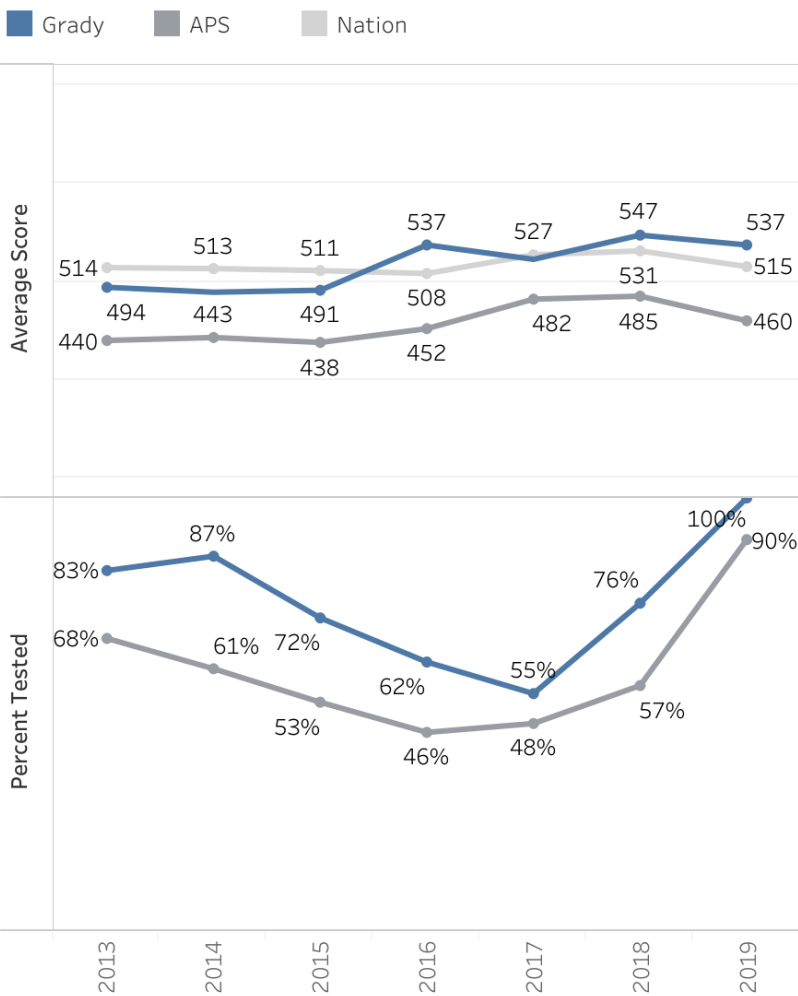
# Performance Drill Down: SAT/ACT

---

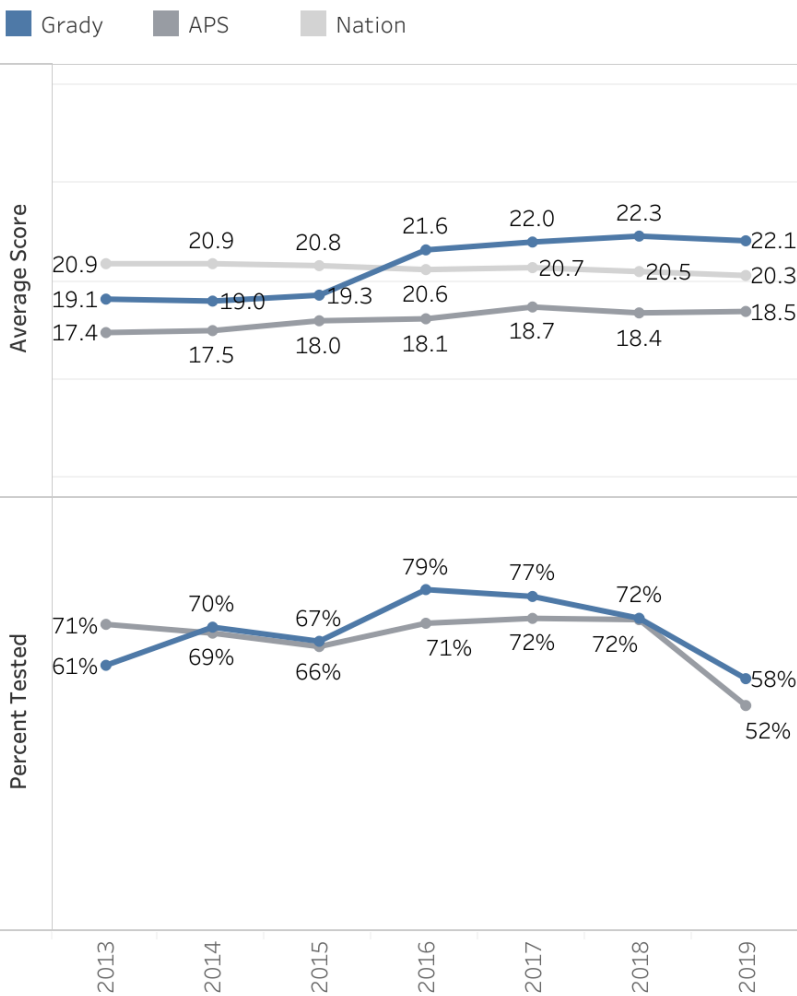
- Based on all self reported 12<sup>th</sup> Graders
  - SAT Day for all Juniors in APS has dramatically increased SAT participation in the district
- <https://apsinsights.org/2019/12/13/2019-act-and-sat-scores/>

# “Class of 2019” – SAT/ACT Performance

Grady SAT Math Over Time



Grady ACT Math Over Time



## District data website

- Build on the APS Data Blog
- Help parents better understand school performance and school options
- Accessible and useful to a range of users
- Mobile-friendly



SCHOOL PROFILES



ENROLLMENT MAP



DATA EXPLORER



BLOG